

# Welcome

A very warm welcome to you, whether you are new to St Matthew's and All Saints' or worship with us every week. We hope you will feel at home in our churches. Please introduce yourself to someone, and stay for coffee, which is served after most services. Please see the back page for useful information for visitors.

If you are a newcomer or visitor, do please consider filling in and returning a welcome card, so that we can be in touch with information about groups and activities of interest and how we can serve you.

## THIS SUNDAY

### 27th November - First Sunday in Advent

8:00am Holy Communion (BCP) at All Saints'

9:30am Morning Worship at All Saints'

11:00am Morning Worship at St Matthew's

6:15pm Holy Communion at St Matthew's  
Commissioning of new chairs in the Chancel

Youth Fellowship at St Matthew's Church Hall

6:00-7:15pm for those in school years 7-9

7:00-8:45pm for those in school years 10-13

## NEXT SUNDAY

### 4th December - Second Sunday in Advent

8:00am Holy Communion (BCP) at St Matthew's

9:30am All Age 'Toy Service' at All Saints'

11:00am All Age 'Toy Service' at St Matthew's

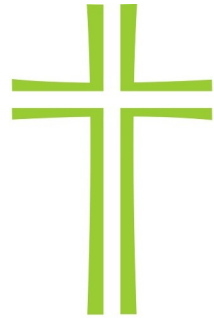
6:15pm Evening Prayer at St Matthew's

Youth Fellowship at St Matthew's Church Hall

6:00-7:15pm for those in school years 7-9

7:00-8:45pm for those in school years 10-13

There are many church groups and activities happening every week and space does not permit inclusion of all of them. You can find details of all church events and



**HARWELL  
CHILTON  
CHURCHES**

## CONTACTS

### Jonathan Mobey

Rector - Tel: 799376  
rector@harwellandchilton  
churches.org.uk

### Pam Rolls

Associate Minister  
Tel: 834475  
pamrolls@tiscali.co.uk

### Peter Shields

Children and Families Worker  
Tel: 07467 038734  
peter@machparish.co.uk

### Vicky Johnston

Church Administrator & PA to  
the Rector. Tel: 834256  
office@harwellandchilton  
churches.org.uk  
Mon/Tue/Thur/Fri 9.30-2.30

If you would like to  
talk with the Rector  
about any matter, please  
contact Jonathan directly,  
or via the Church Office

St Matthew's Harwell  
with All Saints' Chilton

## CHRISTMAS DAY LUNCH



A Christmas lunch will be held in Chilton Village Hall for any who might otherwise be on their own, or who would like company, on Christmas Day from 12.30 – 3.30, including Carols and the Queen's Speech. If you are aware of anyone who would like an invitation please advise Vicky in the church office by 12th Dec.

A donation of £5 from those attending will be requested and any food or other contribution from church members towards the lunch will be welcome.

## CHRISTMAS DAY LUNCH

Tim Paget has a Berghaus Coat that was left over from the Ridgeway Night Hike on Friday 18th November. Please let Tim or the office know if you think its yours! Thank you.

## NEW CHAIRS

The new chairs have recently arrived in St Matthew's church chancel. Join us for a commissioning service next Sunday, 27th November as part of our 6.15pm service.

## TOY SERVICE

At our Toy Services next Sunday we will be collecting toys for Oxford Refuge. This year, the Refuge has a particularly high number of teenage children (and in particular, teenage boys). Teenagers tend to be a bit beyond "toys" as such. So if anyone would like to donate a voucher/gift card instead for that age group that would be really helpful.

At the other end of the age range, the Refuge also has a particularly high number of babies less than 12 months old. So if anyone could donate a toy suitable for a young baby that too would be particularly welcome.

Toys should be brand new please, not second hand, and not wrapped. Cuddly toys are acceptable, provided they are new. For the older children, anything that they can "do" e.g. a science or craft kit or game, as boredom is a real fact of life in a refuge.

Anyone unable to make the service is welcome to hand their toy in to the Church Office by Friday 2 December.

Chilton PCC would like any monetary gifts to be donated to the SeeSaw Charity, which provides grief support for the children of Oxfordshire. Thank you.

## SCIENCE & FAITH



As part of our Science & Faith Project, Lennox from Oxford University is coming to Harwell Campus to discuss if Science & God mix.

Don't miss what will be an interesting evening on 29th November.



Professor John Lennox  
**Tues 29 November**  
7pm, buffet from 6.30pm

Pickavance Lecture Theatre,  
Rutherford Appleton Lab,  
Harwell Campus OX11 0FA

**Free! Please book online <http://tiny.cc/cosmic>**

## GENERATION TO GENERATION

**“Generation to generation praises Your works. Your mighty acts they declare”**

Pebbles - 4; Kids Church - 11; Pathfinders - 7; YF - 13; Fledgelings - 36 children + 30 adults; Y Club - 13

An amazing team of 16 donated 40 hours to serve the children and their families. Thank you.

**Kids Church:** Ever wondered what the initials INRI stand for on pictures of the crucifixion? The children in Kids Church can tell you - and they can even tell you why the equivalent acronym in Hebrew is so astounding that it's almost as if God had planned it! We set you the challenge to find out why.



**Night Hike:** Thank you to Tim Paget for arranging another enjoyable trek in the dark, followed by food round the fire-pit and games in the woods. The brave & intrepid group consisted of 7 children, 7 adults and 2 dogs!



## SCOUTING POST

For 2016 we will be placing our boxes in the usual places (see advertisement) and making deliveries over two weekends. Boxes will be emptied at 4pm on Thursday 8th and Thursday 15th December with delivery two to three days thereafter.

However, we can only accept cards for delivery to Harwell, Chilton, Chilton Fields, Rowstock, West Hagbourne, AEA site - North and South Drive. Upton, Steventon, Great Western Park South of Boundary Park only [Greenwood Way, Harebell Road, Bramble Lane, Orchard Mews, Chestnut Drive, Cherry Tree Road, Foxglove Way, Ivy Close, The Poplars and Holly Lane] Thank you. Brian Zimmerman.

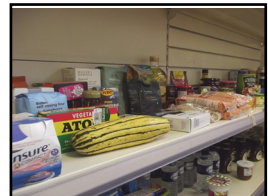
## DIDCOT FOODBANK

Thank you for your donations of food items, every one of which matters and is appreciated by those who are helped by the tins and packets that you provide. When people are sent to us they are at a low point, and we are keen to show them that they are welcome and among friends; can I pass on their thanks to you, and I wish that you could see the morale boost it gives to those who come.

We do not ask people the reasons behind their visit, but based on what they tell us themselves, and the referrers who have issued their vouchers, benefit delays, mental health issues long and short term, unemployment and family break up are the big causes of poverty in the Didcot area.

We are very grateful for the Harvest Festival produce received in October from over 20 local schools and churches, which came just at the right time.

Best wishes and many thanks from  
the Didcot Emergency  
Foodbank Team



## VISITORS' INFO

Children and young people are especially welcome at our services, and there are groups for children and young people in Harwell, and for primary aged and pre-school children in Chilton, along with a family area in both churches.

At our services of Holy Communion all who love the Lord are welcome to share with us. If you require a gluten-free wafer please indicate this to the sidespeople before the service.

Both churches have a hearing loop, and large print service and weekly noticesheets are available. Toilets are at the back of the church in Harwell and accessed from outside at Chilton.

## NOTICESHEET ITEMS

Please submit noticesheet items to Vicky by Wednesday of the preceding week, either via the website, by email, by phone, or by leaving a note in the vestry. The deadline for Broadsheet items is the 2<sup>nd</sup> Wednesday of the month.

News items also appear on our website. You need to be logged-in to see some of them: <http://HCChurches.org>

St Matthew's Registered Charity Number 1158861

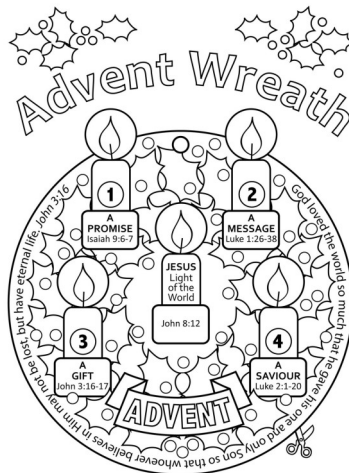


## P R A Y E R F O C U S

*'...in everything by prayer and supplication with thanksgiving let your requests be made known to God' Philippians 4:6*

### Please pray for...

- A peaceful solution to the troubles in Iraq, Syria, Ukraine and Gaza
- All those seeking refuge from war-torn countries
- Those affected by Hurricane Matthew, the earthquakes in Italy and all those bringing aid
- Those who live in Main Street, Chilton and in Didcot Road, Harwell
- Christians Against Poverty
- The two Sudanese Pastors awaiting trial; Hassan Taour & Kuwa Shamal



Colour in the green leaves and berries. Cut out and hang up on ribbon.  
Each Sunday in Advent colour in a candle and read the Bible verses.  
©Deborah Noble@parishpump.co.uk

### Collect for First Sunday in Advent

*Almighty God, give us grace to cast away the works of darkness and to put on the armour of light, now in the time of this mortal life, in which your Son Jesus Christ came to us in great humility; that on the last day, when he shall come again in his glorious majesty to judge the living and the dead, we may rise to the life immortal; through him who is alive and reigns with you, in the unity of the Holy Spirit, one God, now and for ever. Amen.*