

February 2015

RIDGEWAY BROADSHEET



Christingle Services

Sunday 1st February

9:30am All Saints' Chilton

11:00am St Matthew's Harwell

For all ages - just turn up!

Rector of Harwell and Chilton Revd Dr Jonathan Mobey

The Rectory | Church Lane | Harwell | OX11 0EZ
01235 799376 | rector@harwellandchiltonchurches.org.uk

Church Administrator & PA to the Rector Mrs Vicky Johnston
Harwell Church Office | Mon/Tue/Thu/Fri 9.30-2.30 | 01235 834256
office@harwellandchiltonchurches.org.uk

VOLUNTEER AND CARER OPPORTUNITIES WITH STYLE ACRE

Style Acre is an Oxfordshire based charity, which provides care and support for people with learning disabilities throughout South Oxfordshire.

They write...

"At our heart is the commitment to helping people make their own choices about the lives they want to lead and the charity works in partnership with individuals and their families to achieve this.



Dedicated carers support over 70 individuals in 26 houses in Didcot, Cholsey, Sutton Courtenay, Brightwell, Wallingford and other towns and villages in South Oxfordshire. They help the people they support to live their lives to the full, enabling them to reach their true potential.

Style Acre has two day services in Didcot and Wallingford where they offer recreational and social activities to about 120 people. They teach a wide range of skills and support people in finding volunteer, work opportunities and community involvement. Our Tea Room in Blewbury, charity shop in Wallingford and market garden in Wantage enable people with learning disabilities to work.

We are extremely grateful to the local community who continue to support Style Acre and help us continue our important work.

Volunteers help run our Tea room and we are hoping to find volunteers to help us in the houses and our day service in Didcot. We are looking for caring people and especially drivers! If you can spare a few hours a week, every two weeks, or every month, we would love to hear from you. Please call Chris on 01491 827591 or email Chris at cburrows@styleacre.org.uk

We also have full and part-time vacancies for men and women to support people with learning disabilities in their homes. No experience or formal qualifications are necessary: rather, we are looking for caring people with a willingness to learn. We offer good rates of pay (up to £10.81), a generous employer pension contribution and real potential for career/management development. For more information, please contact Tracey on 01491 827594 or email her at recruitment@styleacre.org.uk.

Style Acre has an excellent reputation within the learning disability, the community and Social Services. We really value our staff and our volunteers and recently won the Thames Valley Business Awards 'Charity of the Year', and the Didcot Business and Community Awards for 'Best use of Technology'."

An abridged version of the sermon preached at the funeral of Koreen Davis, Harwell School Secretary, who died on 6th January 2015.

Koreen Jennifer Davis was one of life's beautiful things.

*He gave us eyes to see them,
And lips that we might tell
How great is God Almighty,
Who has made all things well.*

Today we have been sharing our memories of Koreen and giving thanks to Him for her life. Koreen loved and was loved by so many, and that makes it so difficult to accept and to understand why she is no longer with us. Why did she have to go?

There is so much in this world that is beyond our understanding. Science can discover great things and philosophers can have amazing insights – but even the greatest can't answer all our questions.

The Bible says in Deuteronomy 29:29 *"The secret things belong to the Lord our God, but the things revealed belong to us and to our children forever"*. We don't know why Koreen had to go, but Jesus revealed something about God's plans that should give us comfort.

"Do not let your hearts be troubled", Jesus said to his disciples. He was at the time telling them about his own death. But what possible comfort can there be when faced with the death of a loved one? Jesus went on to explain: *"My Father's house has many rooms"*.

Koreen made a lovely home for her family. She knew the importance of having somewhere where you can feel safe, where love can be shared, and where you truly belong. Our heavenly Father knows this too, and has space enough for all of us in his heavenly home. However

unworthy we feel and however many things we have done – or not done – that we regret, there is still a place for us in the Father's house.

Jesus goes on to say that he is going to his Father's house to prepare a place for his friends. He does this by his death and resurrection. Jesus dies a horrible, untimely death, so that our greatest enemy – death itself – may be defeated. Jesus dies and rises again so that we can go to the Father's house.

Jesus makes a journey through death and out the other side so that when we take that journey into death – which we all will one day – we, too, might arrive safely at the Father's house, if only we hold tight to Jesus – the one who describes himself as *"the way, the truth, and the life"*.

Our final hymn is the Harwell School leavers' song. It speaks of a journey:

*One more step along the world I go,
One more step along the world I go...
And it's from the old I travel to the new;
Keep me travelling along with you.*

Jesus alone can bring us safely to the Father's house, because no one else has made that journey through death and defeated it for us.

Jesus offers to those who will join him to go on a journey. It is a journey from the *old* – a world in which we age, get ill and die; a world in which terrible, incomprehensible things happen. It is a journey to the *new* – a life in God's *new* creation, where sickness, suffering, death and mourning will be no more. It is a journey to the Father's house where there are many rooms. And it is a house that is full of beautiful things.

Revd Dr Jonathan Mobey
Rector of Harwell and Chilton

WEEKLY EVENTS

Bell Ringing

7:30pm Mondays at All Saints' Church Tower

7:30pm Thursdays at St Matthew's Church Tower

Choir Practice

7:30pm Wednesdays at All Saints'

Fledgelings

9:30-11:30am Mondays (during term time) at St Matthews Church Hall

Home Groups

8:00pm Mondays at 10 Jennings Lane, Harwell

8:00pm Tuesdays at various homes in Chilton

10:15am Wednesdays at St Matthew's meeting room (during term time)

1:45pm Wednesdays 15 Elderfield Crescent, Chilton (during term time)

7:30pm Wednesdays at various homes in Chilton Field

8:00pm 1st, 2nd & 3rd Thursdays at 'Milburn', Wantage Road, Harwell (during term time)

2.00pm Fridays at Cherry Tree Court, Harwell

Prayer Meeting

8:30am Saturdays at both St Matthew's and All Saints'

Youth Fellowship

Youth Fellowship at St Matthew's meeting room

6:00-7:15pm for those in school years 7-9

7:00-8:15pm for those in school years 10-13

SERVICES

	All Saints' Chilton	St Matthew's Harwell
1st February	9:30am All Age Worship - Christingle	8:00am Holy Communion (BCP)* 11:00am All Age Worship - Christingle 6:15pm Evening Prayer
8th February	8:00am Holy Communion (BCP)* 9:30am Morning Prayer (BCP)*	11:00am Morning Worship 4:30pm 'Hands Free' Worship
15th February	9:30am Holy Communion	8:00am Holy Communion (BCP)* 11:00am Holy Communion 6:15pm Evening Prayer (BCP)*
22nd February	8:00am Holy Communion (BCP)* 9:30am Morning Worship	11:00am Morning Worship 6:15pm Holy Communion

February 2015

MONTHLY EVENTS

Missions Prayer Meeting

Monday 2nd 10:00am - location to be confirmed

Night Prayer

Wednesday 4th 8.30pm at All Saints' Church

All Saints' Women's Group

Tuesday 10th 7:45pm at All Saints' Church - Sadie Gibbons, The Balsam Family Project

Holy Communion (BCP)*

Tuesday 17th 10.00am Holy Communion (BCP)* at Cherry Tree Court, Harwell

Harwell Ladies' Group

Tuesday 17th 7:30pm at St Matthew's Church Hall - talk by the Rector

Harwell Evergreens

Thursday 19th 2:30pm at St Matthew's Church Hall

OTHER EVENTS

Combined PCC meeting

Tuesday 4th February 7:45pm at St Matthew's Church

Christingle Services

Sunday 1st February 9:30am at All Saints' and 11:00am at St. Matthew's

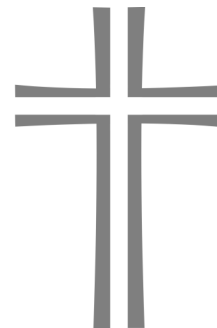
What is a Christingle?

The Orange represents the world. The red ribbon indicates the love and blood of Jesus. The dried fruits and sweets are symbols of God's creations, and the four seasons. The candle represents Jesus as the Light of the World.

Please come and join us; family friendly; Christingles are provided.

For more information on any of these events please check the website: www.hcchurches.org or e-mail the church office office@harwellandchiltonchurches.org.uk

*BCP = Book of Common Prayer



FROM THE PARISH REGISTERS

Funerals

"He who believes in Me will live"

Geraldine Ashby

Derek Goodchild

Koreen Davis

Laurence Gardiner

WEBSITE & FACEBOOK

You can visit our website to find out about our various activities and groups, catch up on news, listen to sermons, access the members-only address book, find useful documents, and lots more: harwellandchiltonchurches.org.uk or hcchurches.org. If you would like to keep up to date with news from our churches, why not 'like' our Facebook page? facebook.com/hcchurches

ALL SAINTS' WOMEN'S GROUP

Due to illness we have had to make a change to our speaker for our February meeting on Tuesday 10th. It will now be Sadie Gibbons speaking about the locally-based Balsam Family Project. This Registered Charity offers a wide range of support to families with young children. BFP works alongside churches to raise awareness of the needs of families and to encourage and train volunteers for practical work in this area.

HARWELL GARDENERS CLUB

Harwell Village Hall Monday 2nd February 7.30pm. 'The year round container garden' with Chris Day. Competition: A bulb/bulbs in a container. Contact David Drummond 821615

THANK YOU

Thank you to Chilton Garden Centre for their generous donation of the magnificent tree which adorned the top of the tower at All Saints', Chilton. It looked lovely and we are very grateful for their kind gift. Thank you to all who came carol singing around Chilton Village and/or in the Rose and Crown just before Christmas. A total of £127.36 was raised for 'Save the Children'. Thank you also to Bill and Muriel Millar and to Shea at the Rose and Crown for their hospitality.

QUIZ NIGHT

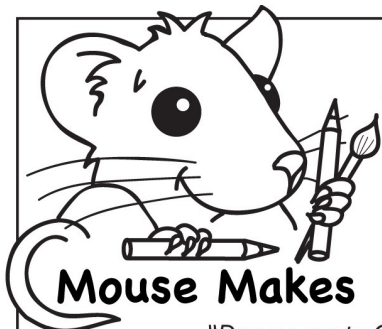
Quiz Night 2015 will be on Saturday 21st March in Chilton Village Hall. Watch this space for further details or contact Judy Goodall on 01235 834503.

CONGRATULATIONS

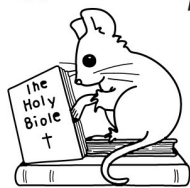
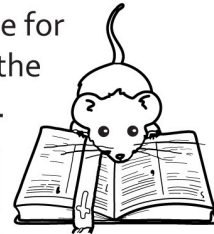
Judy Goodall has been awarded the British Empire Medal in the New Year Honours List in recognition of her service to the community of Chilton. Very well done, Judy!

UNIVERSITY OF THE THIRD AGE

On Tuesday 17th February 2015 the speaker will be Brian Wood, talking about 'A Rustic Copper'. It's never too late to expand your horizons... The University of the Third Age offers the opportunity to share your knowledge, experience and talents with others and learn from them in friendly surroundings. Meetings are held on the third Tuesday of each month at 2pm at Didcot Civil Hall. Visitors are welcome to come to a meeting as a taster before joining. Tel: 07804159993 Email: didcotdistrictU3A@virginmedia.com



The 40 days before Easter are called **LENT**. Lent is a time for Christians to pray, read the bible and turn to God.

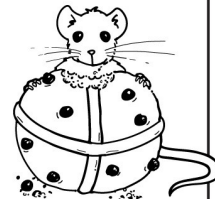
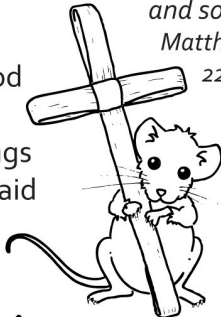


"Draw near to God"
James 4:8

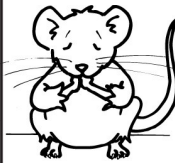
During Lent read
Matthew's Gospel

The first day of Lent is **ASH WEDNESDAY**. It is a day of **repentance**, a day for saying **sorry** to God for any wrong things you have said or thought or done.

"Love God with all your heart, mind and soul"
Matthew 22:37



LENT CALENDAR
Colour in a square each day to Easter



During Lent **pray** for someone, **encourage** someone and **tell** someone about Jesus

Tuesday Monday 40 **PALM SUNDAY** 39

The Lord is here,
His spirit is with us



Wednesday Thursday **GOOD FRIDAY** Saturday



MISSION PARTNER UPDATE

The Church Mission Society (CMS) was founded in the City of London in April 1779 by members of the Clapham Sect, a group of evangelical Christians which included William Wilberforce.



All Saints' and St Matthew's have supported CMS financially and through prayer for many years.

Specific financial and prayer support are provided to CMS mission partners David and Heather Sharland. David and Heather have worked with the rural poor, vulnerable and marginalised in East Africa for more than 25 years. David is an agricultural development specialist and Heather works in health care and training. Between them they have a passion for farming and balance in the environment, improving the health of women (especially mothers), a better chance of survival for babies, and a deepening of faith in everyday life. Currently based in Uganda, David and Heather have a deep love for the people of South Sudan and make occasional ministry visits there.

LENT GROUPS

You are invited to join one of our Lent groups which start the week beginning 16th February and continue for six weeks to the end of March. Whether you come to Church regularly or not, and would welcome the chance to meet with others during the week, Lent is a great opportunity to do so. The meetings will last no longer than an hour and a half.

This year we will be looking at the Bible around the theme "Prepared for purpose". Jesus experienced our weaknesses, but by allowing the Holy Spirit to work through him he was prepared for purpose. We too can be prepared for purpose, even when we feel frail and unable. As a result God can use the gifts that he has given to us more and more.

If you would like to belong to a group please complete a form found at the back of church and give it to Jean Barton, or place it in the box on the table at the back of Church. Alternatively – or if you have any queries – call Jean on 861117 or email jeanvbarton@btinternet.com

IN MEMORY OF KOREEN DAVIS

A bench will be to be placed in the grounds of Harwell School in memory of Koreen. If you would like to make a donation towards this, please do so online at <https://mydonate.bt.com/fundraisers/koreen> or via Harwell School.

Please submit notices to Vicky via the website, by email or by phone.
The deadline is the 2nd Wednesday of the month.
01235 834256, office@harwellandchiltonchurches.org.uk

www.harwellandchiltonchurches.org.uk